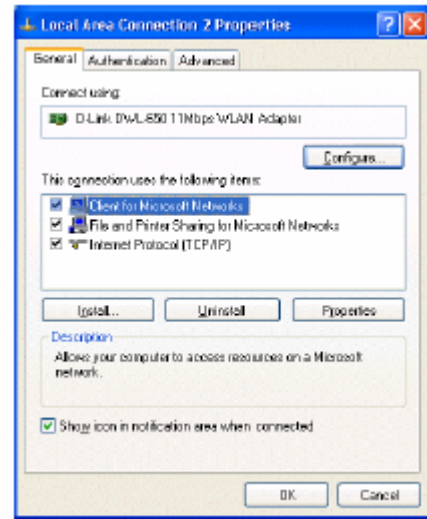


## Configuring Windows XP for Wireless Connectivity

1. Install a wireless card and the necessary drivers as directed by the manufacturer
2. Change the SSID setting to *AmeriSpot*. To do this, go **Start**. Go to **Control Panel**, then **Network and Internet Connections**, and finally **Network Connections**. Find your wireless card. Right-click on the card and go to **Properties**.



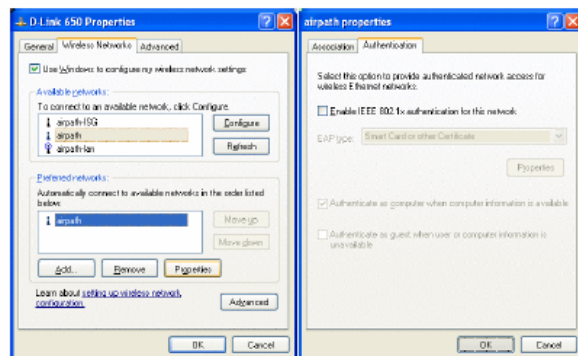
Under the **General** tab click the **Configure** button. Click the **Advanced** tab and find the property for **SSID** in the property list. Highlight the word **SSID**. Change the value to "*AmeriSpot*". Click OK.



Depending on your version of XP (Home, Pro, or whether you upgraded or ran a full install), you may see either one of the following scenarios. Simply follow the one that fits your situation.

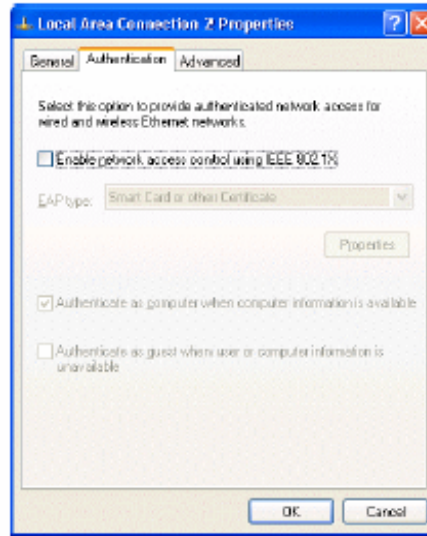
### Scenario 1

3. Click on **Start**. Go to **Control Panel**, then **Network and Internet Connections**, then **Network Connections**, and find your wireless card. Right click on the card and go to **Properties**. Click on the **Wireless Networks** tab. In the **Preferred Connections**, left click on the connection you wish to connect to ("*AmeriSpot*") and go to **Properties**. The properties page for that connection will open up. Under the **Authentication** tab if the "Enable network access control IEEE802.1X" is checked, uncheck it and click **OK**.



### Scenario 2

3. Click on **Start**. Go to **Control Panel**, then **Network and Internet Connections**, then **Network Connections**, and find your wireless card. Right click on the card and go to **Properties**. Under the Authentication tab if the “Enable network access control IEEE 802.1X” is checked, uncheck it and click **OK**.



4. It is recommended that you either reboot your computer or disable and re-enable your wireless card at this time. To do this, click on **Start**. Go to **Control Panel**, then **Network and Internet Connections**, then **Network Connections**, and find your wireless card. Right click on the card and click **Disable**. Wait a few seconds, then right click it again. This time select **Enable**.
5. Open a Browser. You may be asked to accept a security certificate. This is normal. Click **Yes** to accept the certificate. You should now see a login screen. Log in using your full username and password that you created during the signup process, or create a new account by clicking on the signup link located on that page.

